

## Delft, The Netherlands

When you think of Delft, you think of Delftware. But there are also several ways in which you can get 'in contact with' Johannes Vermeer and William of Orange. In and around the inner city are many touristic attractions. One of the main attractions is the famous town hall; see the front picture of this flyer. The city is already visited by a lot of DIANA clients for courses or other meetings.



## Accessibility Delft

Delft is well accessible from European airports. A frequently running train from Amsterdam Schiphol, Rotterdam or Brussels will bring the participants to the city of Delft.

## Venue

The TNO DIANA head office at the Schoemakerstraat 97 in Delft will host the meeting during both Users days, as well as the Celebration Seminar of the Users Association on Wednesday 3<sup>rd</sup> June.

## Accommodation

Please note, that you have to arrange and pay your accommodation yourself. The Users Association has taken some pre-reservations for the China Hotel Holland, Kleveringweg 11 in Delft, which hotel also has been used for DIANA courses in the past. Please contact the Users Meeting Secretary. A list of other hotels in Delft can be found at [www.delft.nl](http://www.delft.nl)

## Users Meeting committee 2009

*DIANA Users Association*

Ane de Boer, Nynke Vollema, Flavio Galanti

*TNO DIANA BV*

Giovanna Lilliu

*JRI Communication*

Jolanda van Willige

## DIANA Users Association



Members of this association are users of the DIANA software program, interested in numerical mechanics, finite element methods and in development and improvement of DIANA.

The scope of the association is to serve as a meeting forum for exchange of experience with DIANA. It also serves as intermediate with TNO DIANA BV, collecting requirements of the members for further development or improvement, and informing members about updates of the software.

The association organizes regular meetings and workshops, and issues reports and publications on projects and studies conducted with DIANA.

More information can be found at

[www.dianausers.nl](http://www.dianausers.nl).

## TNO DIANA BV



This wholly owned subsidiary of TNO develops, markets and supports the DIANA Finite Element Analysis software packages and undertakes customization, consultancy and client training activities on behalf of customers world-wide. The team of TNO DIANA BV has a well-proven track record, stretching back to the 1970's in the delivery of high quality finite element analysis technology to leading engineering-based organisations.

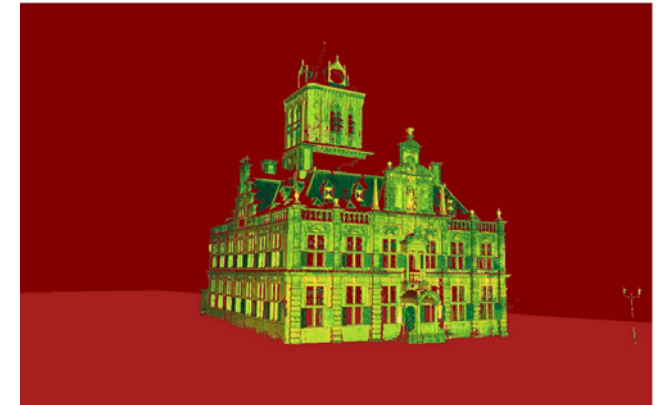
The company is focused on helping customers in civil, structural and petroleum engineering to achieve their goals through the more efficient and effective use of accurate analysis tools.

Courses are scheduled in the week after this Users event. More information can be found at

[www.tnodiana.com](http://www.tnodiana.com).



## FINAL ANNOUNCEMENT



## International DIANA Users Meeting

**4 - 5 June 2009**

**Head Office TNO DIANA BV  
Delft, The Netherlands**

## Presentations

- **Hybrid concrete beams with lightweight concrete and fibre-reinforcement**, Linn Grepstad & Jan Arve Øverli, *Norway*
- **Groningen and DIANA**, Ab van den Bos, *The Netherlands*
- **Numerical analysis of building damage due to tunnelling: from 3D to 2D modelling**, Giorgia Giardina, *The Netherlands*
- **Design of the cross-passages in the shield drive tunnels of the North/Southline**, Frank Haring, *The Netherlands*
- **Numerical simulation of the behaviour of a gusset plate connection under cyclic loading**, Roberto Nascimbene, *Italy*
- **A model which includes compressive membrane action**, Gert Jan Bakker, *The Netherlands*
- **Analysis and design of a liquefied natural gas storage tank under spill and fire load conditions**, Willem Peperkamp, *The Netherlands*
- **Numerical analyses of steel frames with precast concrete infill panels**, Paul Teeuwen, *The Netherlands*
- **Semi-probabilistic lining design of a shield driven tunnel**, Nicolaas van Empel, *The Netherlands*
- **Material model for the analysis of 2D RC cracked membrane elements under in plane shear and axial stresses: formulation and validation of the constitutive laws**, Mario Pimentel, *Portugal*
- **Settlement risk assessment for the North/Southline**, Richard Roggeveld, *The Netherlands*
- **The sensitivity of Sequential Linear Analysis schemes to the number of saw-teeth in the material softening diagram**, Anne van der Graaf, *The Netherlands*
- **Parametric and associative modeling development as new approach for structural design in addition to finite element analysis**, Eliza Guse, *The Netherlands*
- **Modeling of severely corroded reinforced concrete beam with anchorage failure**, Kamyab Zandi Hanjari, *Sweden*
- **Blast load analysis on a storage tank**, Marcel 't Hart, *The Netherlands*

## Social Event

The social event will take place on the Thursday late afternoon and evening. The bustour will visit the Maeslantkering, a storm surge barrier in front of the Rotterdam harbour and one of the national products against the water. It's the last movable barrier of the Deltawerken, completed in 1997. This work of the Deltawerken started after the flood disaster in 1953 in the provinces of Zeeland and Zuid-Holland.



The second part of the event is called Skills and Skiffle. It is an evening with food, drinks and entertainment. An explanation will be given about Old Dutch Games such as; Little Hammergegame, Pinballs, the Toptable, Beugelen or the secret of the blacksmith. After the overview of games a dinner will be served at the same location.

## Workshop

On Friday afternoon an open discussion will be organized on wishes for future DIANA versions. The main wishes of the last years were pre/post facilities, facilities to recommendations and robustness. Time will be scheduled for specific questions or remarks concerning the use of DIANA.

## Celebration Seminar

On Wednesday 3<sup>th</sup> June 2009, the DIANA Users Association will celebrate its 25<sup>th</sup> foundation anniversary. This celebration will be held in the same venue as the Users Meeting. The program exists of lectures, election of the winner of the FE competition and of course a drink. This drink is also the welcome party of the Users Meeting. Pre-registration for this event is necessary. No additional fee for this event is charged.

## REGISTRATION FORM

(also downloadable from [www.dianausers.nl](http://www.dianausers.nl))

Please complete this form, deleting as appropriate, and send to the Meeting Secretary.

Full name > .....  
Job title > .....  
Organisation > .....  
VAT number >... < EC only >  
Postal address > .....  
Country > .....  
Phone > .....  
Email > .....  
Special needs >/ disabilities/ dietary / vegetarian /

### SUBSCRIBES TO

- Int. DIANA Users Meeting on 4 & 5 June 2009  
fee members, students & speakers = € 300  
fee non-members = € 400  
Fee includes lunches, refreshments, social event and welcome party.
- I will participate in the Celebration Seminar on 3 June 2009

### METHOD OF PAYMENT

Electronic banking is preferred; for bank-account: details see below. We will confirm your registration as soon as your payment has been received.

### POSTAL ADDRESS

DIANA Users Association  
P/o RWS DI-CT, Attn. Ane de Boer  
P.O. Box 20.000, 3502 LA UTRECHT, The Netherlands

### MORE INFO: Users Meeting Secretary

JRI Communication  
Mrs. J. van Willige  
Phone > +31 (0)6 17 28 47 39; Fax > +31 (0)842 26 88 91  
Email > [info@dianausers.nl](mailto:info@dianausers.nl)

### ELECTRONIC BANKING (preferred)

Bank name: ABN-AMRO Bank Beuningen  
Payment reference: DIANA Users Meeting 2009  
Address: Julianaplein 103  
NL-6641 CS BEUNINGEN  
Account name: DIANA Ontwikkelings Vereniging  
Account number: 517360381  
IBAN code: NL14ABNA0517360381